

Your family and the ENERGY STAR[™] approved PowerWatch system.



Understanding how your family consumes power is the first step in creating a conservation plan that will deliver long term significant savings. By placing the wireless display where the whole family can see it, everyone can participate in tracking down unneeded power consumption. The simple-to-use software package allows for 10 years of detailed tracking, and cost forecasting greatly simplifying participation in power provider discount programs. Conservation is really about modifying our power consumption behavior.



Just like adopting a healthy lifestyle depends on exercise, making informed choices about food and monitoring weight, PowerWatch will help your family achieve a conservation lifestyle through education. The wireless display is a great way to engage children in your family's conservation plan. Children enjoy the challenge of tracking down the source of unnecessary power consumption and in the process naturally adapt a conservation behavior that will yield a lifetime of savings.

What's in the PowerWatch package?



- Tools that allow the entire family to make informed decisions about their energy use
- An easy-to-understand real-time information display
- The ability to instantaneously see the cost and power use reductions as electrical devices are turned off or unplugged
- An accurate, real-time view of monthly energy costs
- The capacity to store up to 10 years of consumption data
- Quick and easy installation alongside a home's power distribution panel by qualified electricians
- Comprehensive support available at www.powerwatch.com
- A return on investment 6 months (based on average Canadian household)

 **PowerWatch**
CONSERVATION THROUGH INNOVATION
333 Wycroft Road,
Unit 3, Oakville ON
Canada L6K 2h2

To find out more on how PowerWatch can transform your energy costs contact us at
sales@powerwatch.com
P 905.338.2900
F 905.825.5639
www.powerwatch.com



Reduce your energy bill by 20% and empower your family to conserve.



 **PowerWatch**
CONSERVATION THROUGH INNOVATION

100% Canadian owned and operated 

Real-time Energy Monitoring System

Common Questions about PowerWatch.

Savings equivalent to 1 month of free electricity every 5 months.



Q Are you tired of paying too much for electricity and having no control over your bill?

A PowerWatch is a concrete, hands-on conservation solution that empowers your family to save the equivalent of 1 month of electricity bills every 5 months. Now you can see your real-time energy usage, and what it is costing you in real-time. The simple to use wireless display can also tell you your energy costs over time, forecast your cost and consumption and calculate cost based on tiered consumption and time of day usage. The simple-to-use PC software included with your PowerWatch system transforms your home computer into a powerful energy management tool providing 10 years of detailed tracking, and cost forecasting greatly simplifying participation in power provider discount programs.

Q How is PowerWatch different from a "Smart Meter"?

A Smart meters enable your utility company to communicate to your meter via the internet to create your bill without reading the meter and to create more detailed costing based on aggregate consumption, and energy costs tiered on time-of-day usage. PowerWatch is your family's conservation tool to monitor your energy usage, and costs while creating a conservation plan that delivers savings through reduced use.

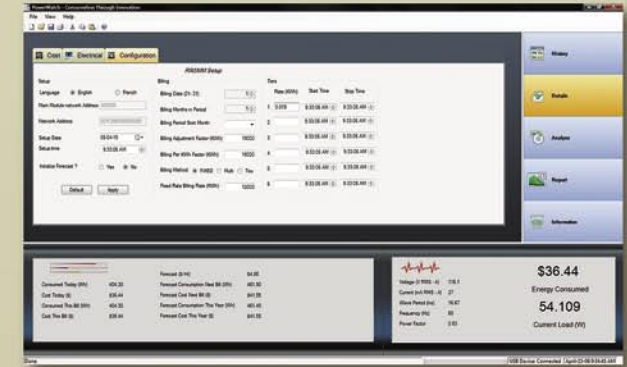
Q Do you want to help and be part of conservation but really feel you can make a tangible difference and do not know where or how to start?

A Until now, home owners wishing to reduce consumption were limited to turning off lights when they remember, buying more efficient appliances and hoping their conservation efforts would appear on their utility bill 2 months later. Simply by monitoring your real-time energy use and costs on the wireless display your family will quickly adopt a conservation behavior that will yield a lifetime of savings. Independent studies have proven that families using this real-time energy monitor reduce power consumption by 6-20%

PowerWatch features an electrical measuring device that is installed adjacent to your power distribution panel. It reports wirelessly to a monitoring display that shows instantaneous energy use and cost savings as you reduce usage around your home. You can turn off lights, your electronic devices, and your air conditioner and watch your consumption and cost drop on the display. Upload information to your laptop via the display's USB port and manage data with our easy-to-use software included with every PowerWatch system. Power Watch was designed with your interaction in mind.

Wireless display and simple, intuitive software for the home owner's computer provides:

- See energy costs in real-time (accumulated, hourly, daily weekly, yearly)
- Energy consumption (accumulated, hourly, daily weekly, yearly)
- Calculates energy costs tiered based on aggregate consumption, and energy costs tiered on time-of-day usage.
- Wireless display can be placed up to 75 meters from the power distribution panel
- Easy-to-use software provides reports allowing you to participate in conservation programs and rebates offered by local electrical distributors



How PowerWatch Works

